

- Dual Outputs
- Small Footprint, Low Profile 12.5mm Height
- MIL-STD-810F Compliant
- Efficiency >80% Full Load
- MIL-STD-461E Compliance for EMI
- MIL-STD-704D and 1275A for Input Transients
- On Board Protection Features

DESCRIPTION:

This compact, ruggedized, dual output design is based on Active Clamp Forward Converters with Synchronous Output Rectification achieving the highest possible efficiency. This power supply has built-in MIL-STD-461E/F EMI filtering including output over voltage, over current, over temperature, and input surge protections. All fitting in a rugged aluminium enclosure that is under a half an inch tall (12.5mm).

GENERAL SPECIFICATIONS	
INPUT VOLTAGE	16 - 40 VDC
FREQUENCY RANGE	300 - 500KHz
OUTPUT VOLTAGE AND NOMINAL CURRENT	VOUT 1: 5V @ 4A VOUT 2: -5V @ 4A
OUTPUT POWER (Max)	40W
PHYSICAL SIZE	50mm (1.968") L x 50mm (1.968") W x 12.5mm (0.492") H
WEIGHT	< 50g
MTBF	>150,000 hours, calculated per MIL-STD-217F

PHYSICAL CHARACTERISTICS	
MAXIMUM CASE SIZE	50mm x 50mm x 12.5mm (L W H)
COOLING METHOD	Conduction
ENCAPSULATION	Conformal Coat
ENCLOSURE FINISH	Yellow Chromate
BASEPLATE FINISH	N/A
INPUT/OUTPUT TERMINATION	.040" Gold Plated Brass Pins
MOUNTING	(2x) M2 through
WEIGHT	< 50g



MP2172

DUAL OUTPUT DC/DC CONVERTER

ELECTRICAL SPECIFICATIONS	
LINE REGULATION	1% (Lo Line to Hi Line)
LOAD REGULATION	1% (1/2-FL W/SENSE)
PARD (RIPPLE NOISE)	20.0mVp-p typical (1% max.)
OVERCURRENT SETPOINT	150% typ (from nom.)
OVERVOLTAGE PROTECTION	Input- >50V no dam./80V 100mS/100V 50ms; Outputs – 120% of nom., passive
REVERSE POLARITY	-48Vdc, Indefinite
LOAD STEP RECOVERY	<10% of nom. Vout for 200ms (1/2 to F.L.)
EFFICIENCY (TYP.)	>80% at maximum load
ISOLATION	200Vrms between primary input and output and case
EMI FILTERING	MIL-STD-461E/F for CE101 and CE102

ENVIRONMENTAL SPECIFICATIONS*		
ALTITUDE	MIL-STD-810F	Method 500.1, Procedure 1
HIGH TEMPERATURE	MIL-STD-810F	Method 501.4 Procedure 1 & 2
LOW TEMPERATURE	MIL-STD-810F	Method 502.4 Procedure 1 & 2
HUMIDITY	MIL-STD-202G	Method 103B
FUNGUS	MIL-STD-810F	Method 508, Condition A
SALT FOG	MIL-STD-202G	Method 101 E, Test Condition A
SAND AND DUST	MIL-STD-810F	Method 501.4, Procedure 1 & 2
EXPLOSIVE ATMOSPHERE	MIL-STD-810F	Method 511, Condition A
ACCELERATION	MIL-STD-810F	Method 513.5, Procedure 1 & 2
VIBRATION	MIL-STD-810F	Method 514.2
SHOCK	MIL-STD-883	Method 2002.4

*Designed to meet.

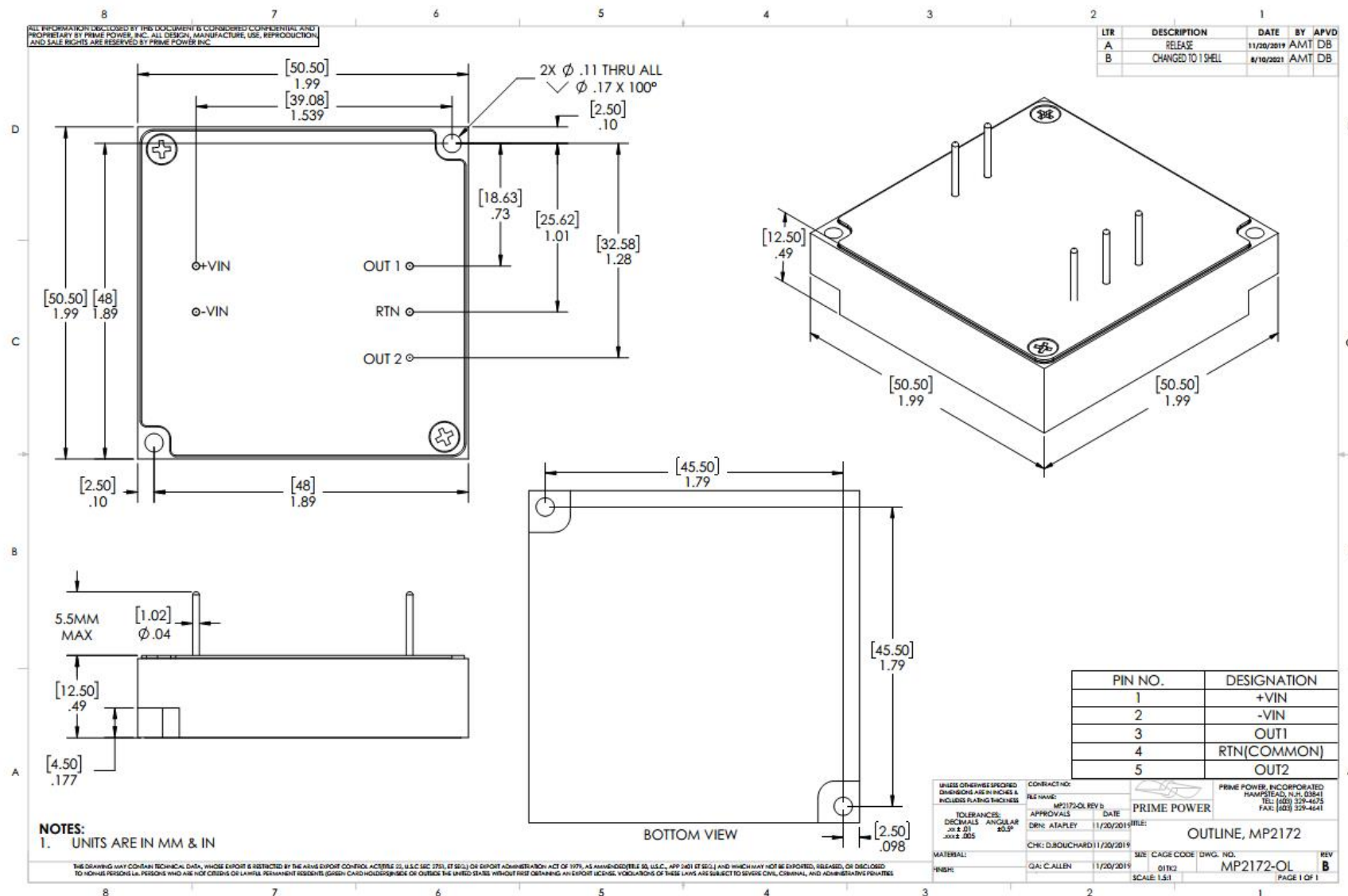
TEMPERATURE SPECIFICATIONS	
OPERATING TEMPERATURE	-55 C to +85 C
STORAGE TEMPERATURE	-55 C to +125 C
THERMAL SHUTDOWN	Shut Down: + 105°C (±5° C) Auto Recovery: <95°C(±5°C)
POWER DERATING	Full Rated Power at: +85 C Baseplate Derate > +85 C Baseplate: 2.0 W/°C
TEMPERATURE COEFFICIENT	.02%/°C

PRELIMINARY: Please keep in mind that this document is used for marketing and provides general specifications which are preliminary. Any changes will be finalized and approved by customer when contracted.



MP2172

DUAL OUTPUT DC/DC CONVERTER



WWW.PRIME-POWER.COM

SALES@PRIME-POWER.COM

PRIME POWER INC. (603) 329-4675.
1 OWENS CT.
HAMPSTEAD NH, 03841.