



XP2237

DUAL INPUT AC/DC & DC/DC CONVERTER FOR GROUND VEHICLES



- Enhanced Position Locating Reporting System Dual Power Adapter (EDPA)
- Dual Input (AC & DC) Power Supply
- Fully Qualified To MIL-SID-461 & MIL-STD-810 Requirements
- Meets DC Requirements Of MIL-STD-1275
- Meets AC Requirements Of MIL-STD-704
- Fully Compliant To Rev. 'D' Of Government Performance Spec.
- NAVMAT Component Derating

DESCRIPTION:

The EDPA Power Supply is designed to work with the EPLRS receiver transmitter. The EDPA Power Supply is capable of operating from an AC input as well as DC input voltage. The EDPA electrically and mechanically makes up with the EPLRS RT. The EDPA fully meets the requirements of Rev. D of the performance specification for the EDPA.

GENERAL SPECIFICATIONS		
	DC	AC
INPUT VOLTAGE:	+20 – 32VDC	90 – 260VAC
FREQUENCY RANGE:	N/A	60HZ – 400HZ
OUTPUT VOLTAGE:	+28.5VDC	+28.5VDC
OUTPUT CURRENT:	0-6A	0-6A
PHYSICAL SIZE:	10.17 X 4.94 X 3.52	
WEIGHT:	10LBS.	
MTBF:	2,100,000 HRS	

PHYSICAL CHARACTERISTICS	
COOLING METHOD	CONDUCTION
ENCAPSULATION	N/A
ENCLOSURE FINISH	CARC GREEN
BASEPLATE FINISH	N/A
INPUT/OUTPUT TERMINATION	INPUT: M527470Y15E978 OUTPUT: SM-A-911267-1
MOUNTING	CUSTOM PER SPEC
WEIGHT	<10LBS



XP2237

DUAL INPUT AC/DC & DC/DC CONVERTER FOR GROUND VEHICLES

ELECTRICAL SPECIFICATIONS		
LINE REGULATION (LO LINE TO HI LINE)	±3%	
LOAD REGULATION (1/2-FL W/SENSE)	±3%	
PARD (RIPPLE NOISE) DC-20MHZ	80mVp-p	
SHORT CIRCUIT PROTECTION	PRIMARY SIDE CURRENT LIMITING	
INRUSH CURRENT	7 AMPS FOR 1 SECOND	
OVERVOLTAGE SET	35VDC	
TURN-ON OVERSHOOT	<1%	
EFFICIENCY (MIN)	75%	
ISOLATION	PRIMARY TO DC RTN	PRIMARY TO DC OUT
	1500VAC	1500VAC
EMI FILTERING	MIL-STD-461B, CE03, CS01, RE02, CS02	
OUTPUT POWER	170 WATTS	

ENVIRONMENTAL SPECIFICATIONS		
ALTITUDE	MIL-STD-810C	METHOD 501.1 PROCEDURE 1
HIGH TEMPERATURE	MIL-STD-810C	METHOD 501.1 PROCEDURE 2
LOW TEMPERATURE	MIL-STD-810C	METHOD 502.1 PROCEDURE 1
HUMIDITY	MIL-STD-810C	METHOD 500.1 PROCEDURE 1
FUNGUS		CERTIFICATION OF NON-NUTRIENT MATERIAL
SALT FOG	MIL-STD-810C	METHOD 509.1
SAND AND DUST	MIL-STD-810C	METHOD 510.1, PROCEDURE 1
EXPLOSIVE ATMOSPHERE	MIL-STD-810C	METHOD 511.1, PROCEDURE 1
VIBRATION	MIL-STD-810C	METHOD 514.2 PROCEDURE VIII
SHOCK	MIL-STD-901	LIGHTWEIGHT EQUIPMENT
IMMERSION	MIL-STD-810C	METHOD 512.1, PROCEDURE 1
NUCLEAR SURVIVABILITY	ELECTROMAGNETIC PULSE	EDPA MEETS NUCLEAR SURVIVABILITY

TEMPERATURE SPECIFICATIONS	
OPERATING TEMPERATURE	-46°C TO +71°C
STORAGE TEMPERATURE	-62°C TO +71°C
TEMPERATURE COEFFICIENT	±2%/°C

WWW.PRIME-POWER.COM

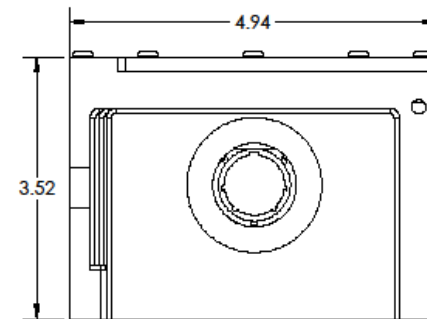
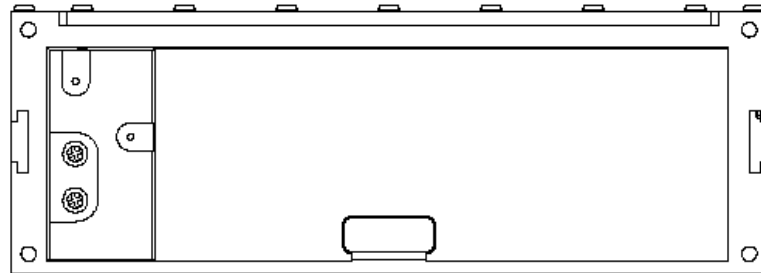
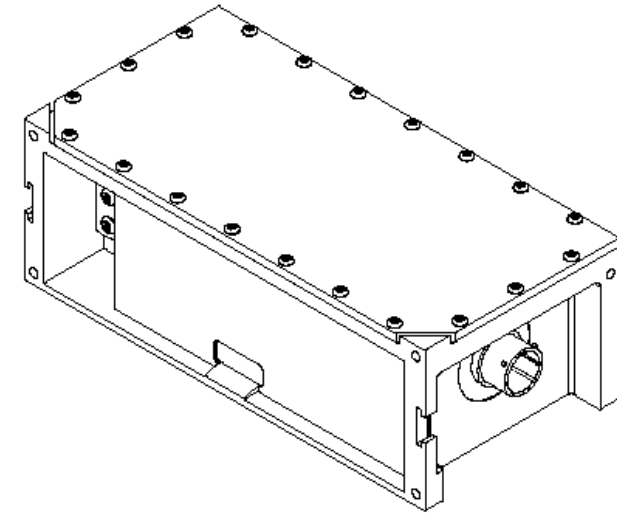
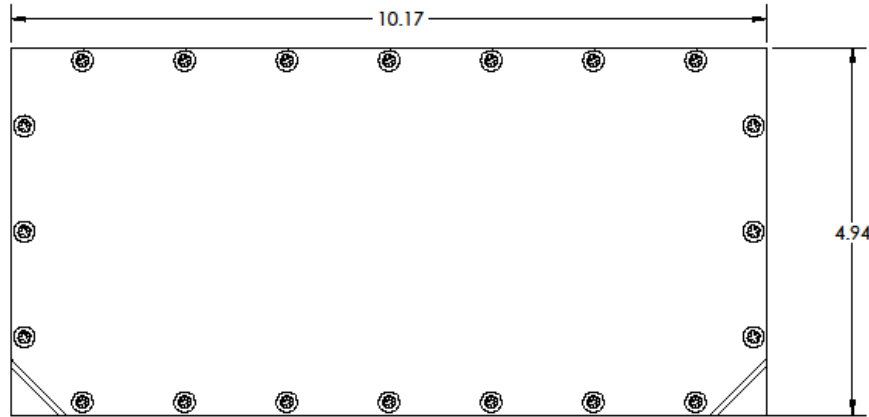
SALES@PRIME-POWER.COM

PRIME POWER INC: (603) 329-4675.
1 OWENS CT.
HAMPSTEAD NH, 03841.



XP2237

DUAL INPUT AC/DC & DC/DC CONVERTER FOR GROUND VEHICLES



WWW.PRIME-POWER.COM

SALES@PRIME-POWER.COM

PRIME POWER INC: (603) 329-4675.
1 OWENS CT.
HAMPSTEAD NH, 03841.