



XP2235

1500 WATT 19" RACK MOUNT MULTI OUTPUT POWER SUPPLY



- Meets MIL-STD-1399 for NAVY Applications
- Operating Range -40°C to +85°C
- Overcurrent/Overvoltage Protection
- Externally Trimmable Outputs
- .99 Power Factor
- High Efficiency 19" Rack Mount System
- Up To 5 Available Outputs

DESCRIPTION:

This AC/DC power supply is enclosed in a 19" rack mount system. The power supply is capable of outputting 4 separate outputs totaling 1500 watts if output power. This power supply is designed to meet MIL-STD-1399 requirements for NAVY applications, along with MIL-STD-810 environmental requirements.

GENERAL SPECIFICATIONS				
INPUT VOLTAGE	230VAC ± 5%			
FREQUENCY RANGE	45-65HZ			
OUTPUT VOLTAGE	+12VDC	-12VDC	+3.3VDC	+5VDC
OUTPUT CURRENT	50 AMPS	50 AMPS	10 AMPS	60 AMPS
PHYSICAL SIZE	SEE MECHANICAL OUTLINE			
WEIGHT	TBD			
MTBF	TBD			

PHYSICAL CHARACTERISTICS	
MAXIMUM CASE SIZE	19 INCH RACK SYSTEM
COOLING METHOD	AIR COOLED
ENCAPSULATION	N/A
ENCLOSURE FINISH	CHROMATE
BASEPLATE FINISH	CHROMATE
INPUT/OUTPUT TERMINATION	CIRCULAR MIL CONNECTOR
MOUNTING	19" RACK MOUNTING
WEIGHT	TBD

WWW.PRIME-POWER.COM

SALES@PRIME-POWER.COM

PRIME POWER INC: (603) 329-4675.
1 OWENS CT.
HAMPSTEAD NH, 03841.



XP2235

1500 WATT 19" RACK MOUNT MULTI OUTPUT POWER SUPPLY

ELECTRICAL SPECIFICATIONS				
OUTPUT VOLTAGE	+12VDC	-12VDC	+3.3VDC	+5VDC
LINE REGULATION (LO LINE TO HI LINE)	±.5%	±.5%	±.5%	±.5%
LOAD REGULATION (1/2-FL W/SENSE)	±1%	±1%	±1%	±1%
PARD (RIPPLE NOISE) DC-20MHZ	240MV P-P	240MV P-P	70MV P-P	280MV P-P
OVERCURRENT SETPOINT	55-70 AMPS	55-70 AMPS	32-43 AMPS	88-112 AMPS
OVERVOLTAGE SET	+16.5VDC MAX	-16.5VDC MAX	+4.5VDC MAX	+6.9VDC MAX
SHORT CIRCUIT CURRENT	SHUTDOWN TO RETRY			
LOAD STEP RECOVERY (1/2 TO FL)	500MV	500MV	50MV	200MV
TURN-ON OVERSHOOT	0V	0V	0V	0V
ISOLATION	I/O 4250VDC			
EFFICIENCY (MIN)	82%			
EMI FILTERING	MIL-STD-461			
OUTPUT POWER	1533 WATTS TOTAL			

ENVIRONMENTAL SPECIFICATIONS		
PRESSURE-ALTITUDE		
HIGH TEMPERATURE	MIL-STD-810F	METHOD 501.4 PROCEDURE 1 & 2
LOW TEMPERATURE	MIL-STD-810F	METHOD 502.4 PROCEDURE 1 & 2
HUMIDITY	MIL-STD-202G	METHOD 103B
FUNGUS	MIL-STD-810F	METHOD 508, CONDITION A
SALT FOG	MIL-STD-202G	METHOD 101 E, TEST CONDITION A
SAND AND DUST	MIL-STD-810F	METHOD 501.4, PROCEDURE 1 & 2
EXPLOSIVE ATMOSPHERE	MIL-STD-810F	METHOD 511, CONDITION A
ACCELERATION	MIL-STD-810F	METHOD 513.5, PROCEDURE 1 & 2
VIBRATION	MIL-STD-810F	METHOD 514.2
SHOCK	MIL-STD-883	METHOD 2002.4

TEMPERATURE SPECIFICATIONS	
OPERATING TEMPERATURE	-40°C TO +85°C
STORAGE TEMPERATURE	-55°C TO +100°C
TEMPERATURE COEFFICIENT	±.02%/°C

WWW.PRIME-POWER.COM

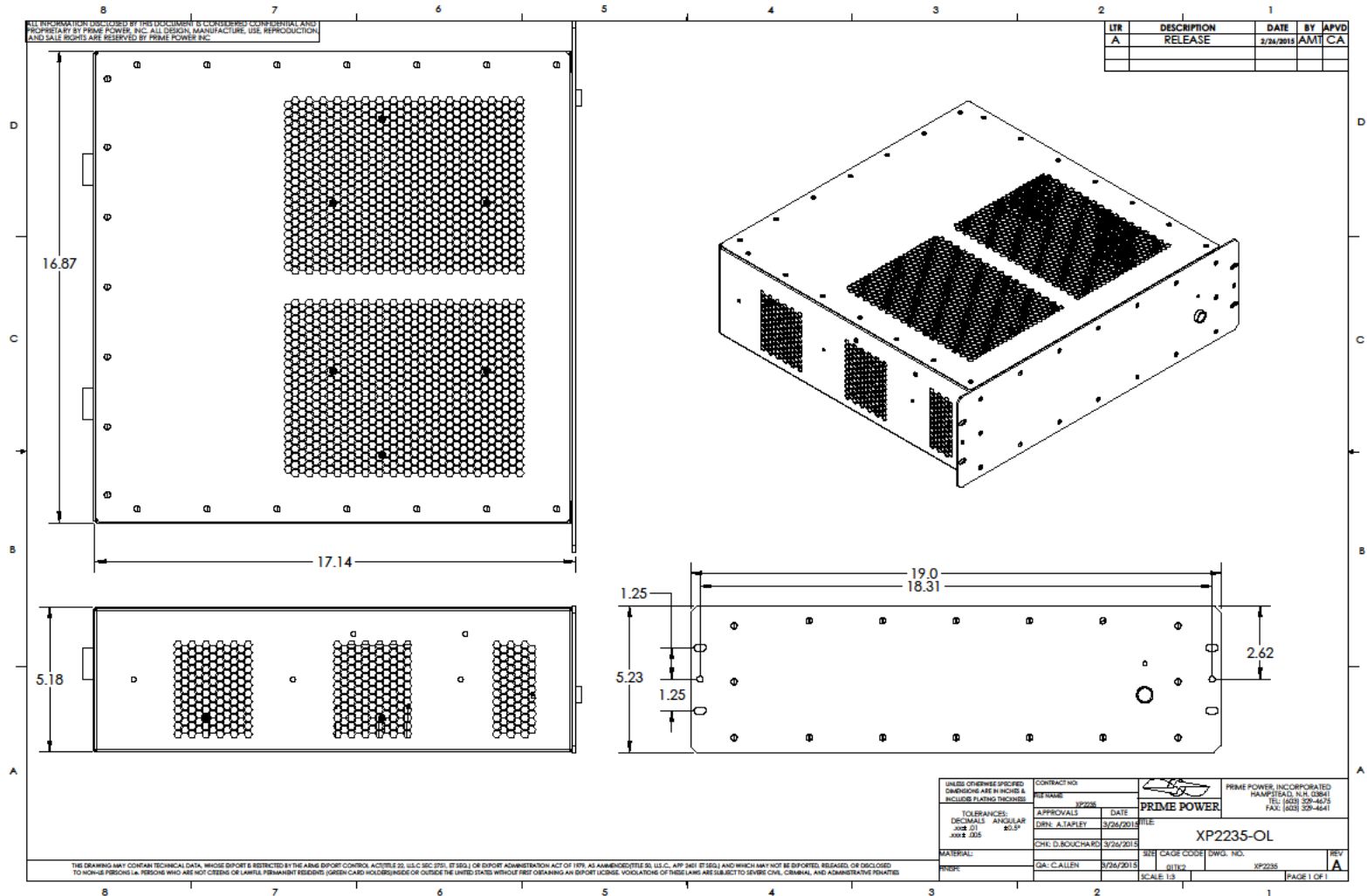
SALES@PRIME-POWER.COM

PRIME POWER INC: (603) 329-4675.
1 OWENS CT.
HAMPSTEAD NH, 03841.



XP2235

1500 WATT 19" RACK MOUNT MULTI OUTPUT POWER SUPPLY



WWW.PRIME-POWER.COM

SALES@PRIME-POWER.COM

PRIME POWER INC: (603) 329-4675.
 1 OWENS CT.
 HAMPSTEAD NH, 03841.